

## ARC FS

Flanged type, super short block with low height, with and without ball chain.

For high load applications or any application where severe chock-loads may occur, the standard version offers better safety margins by its higher static limit (C0). For light to medium loads where a very long lifetime is required, the ball-cage will show superior life span and reliability.

Please note that ball chain versions must never be used for linear speeds exceeding 3 m/s!

Size 15 delivered with straight standard nipple.  
Size 20 – 30 delivered with angled standard nipple.

Lubrications injections ports on the block:

N1: Front of the block. All blocks are delivered with front mounted standard grease nipple.

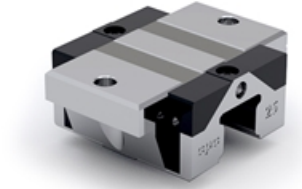
N2: Side of the block. The side lubrication injection port is sealed on delivery to prevent leakage of lubrication.

N3: Top of the block with an O-ring seal. The top lubrication injection port is sealed on delivery to prevent leakage of lubrication.

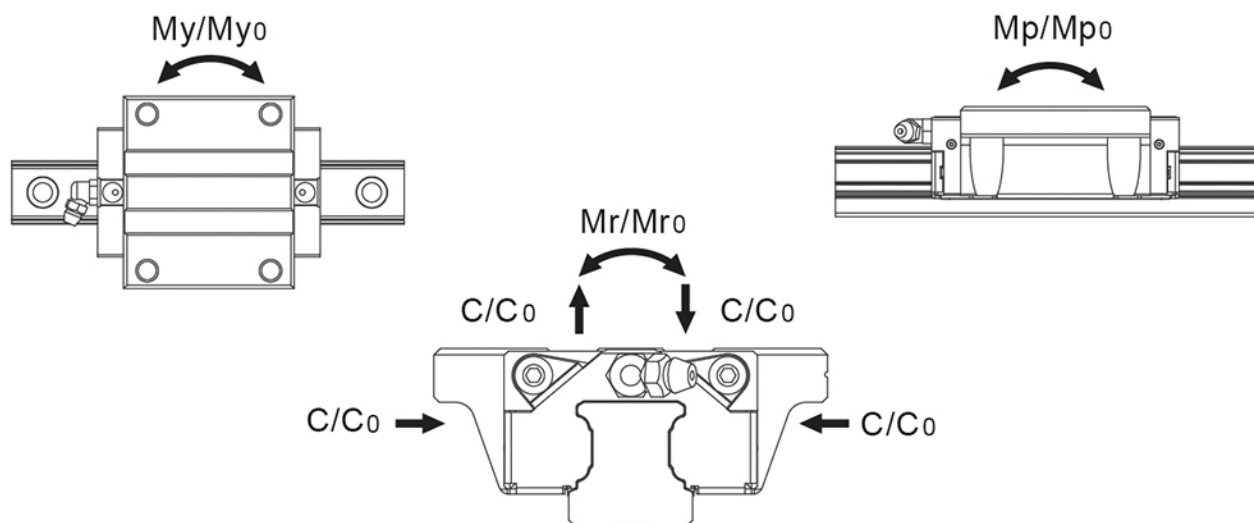
Dimensions in mm.

Lead times in the table below are only indications. Choice of preload, accuracy class and other options will affect lead time. Please contact us for exact delivery time for your request.

For more information about calculation of life, load rating and static moment see Technical information.



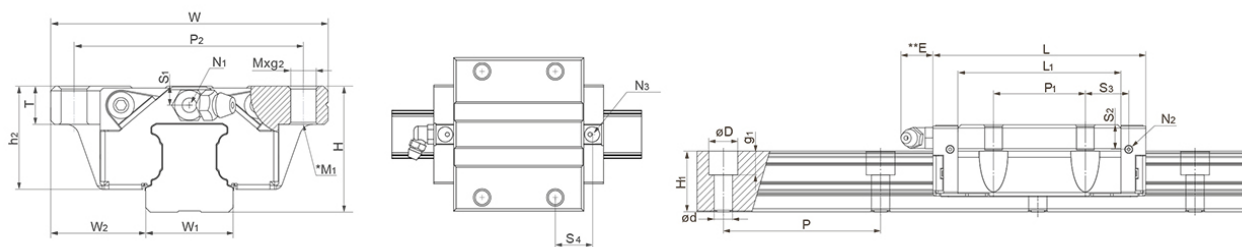
## General Data



Designation	Dynamic Load Capacity C (N)	Static Load Capacity C0 (N)	Static Moment Mp0 (Nm)	Static Moment Mr0 (Nm)	Static Moment My0 (Nm)
ARC15FS	7700	12100	50	100	50
ARC20FS	12500	19300	100	205	100
ARC25FS	18200	27300	160	350	160
ARC30FS	23300	33100	230	520	230

Designation	Dynamic Moment Mr (Nm)	Dynamic Moment Mp (Nm)	Dynamic Moment My (Nm)	Weight Block (g)
ARC15FS	64	32	32	132
ARC20FS	133	65	65	210
ARC25FS	233	107	107	345
ARC30FS	366	162	162	750

## Dimensions



\*M1: Bolt size for bottom mounting type of block  
 \*\*E: Size 15 delivered with straight standard nipple.  
 Size 20 – 55 delivered with angled standard nipple.

Designation	L	H	W	L1	H1	h2	W1	W2	S1
ARC15FS	41.2	24	52	26	15	20.7	15	18.5	4.5
ARC20FS	49.2	28	59	32.2	20	23	20	19.5	4
ARC25FS	57.4	33	73	34.8	23	27	23	25	5
ARC30FS	68	42	90	44	27	35.2	28	31	7.5

Designation	S2	S3	S4	E	T	N1	N2	N3	M x g2	M1
ARC15FS	7.5	15.6	16.7	5.3	7	M3x6.5	M3x6	P3	M5x7	M4
ARC20FS	7.4	19.1	19.8	10	10	M3x7.5	M3x5.5	P4	M6x10	M5
ARC25FS	9.3	22.2	23.2	12	12	M6x7.5	M3x6.5	P4	M8x12	M6
ARC30FS	12	27	26.8	12	15	M6x8.5	M6x5	P5	M10x15	M8

Designation	D x d x g1	P2	Hole Pitch (P)
ARC15FS	7.5 x 4.5 x 5.3	41	60
ARC20FS	9.5 x 6 x 8.5	49	60
ARC25FS	11 x 7 x 9	60	60
ARC30FS	14 x 9 x 12	72	80