

## FSER

Single Nut with Flange, Long Lead.

Standard nuts are with oil-seals. Other types on request.

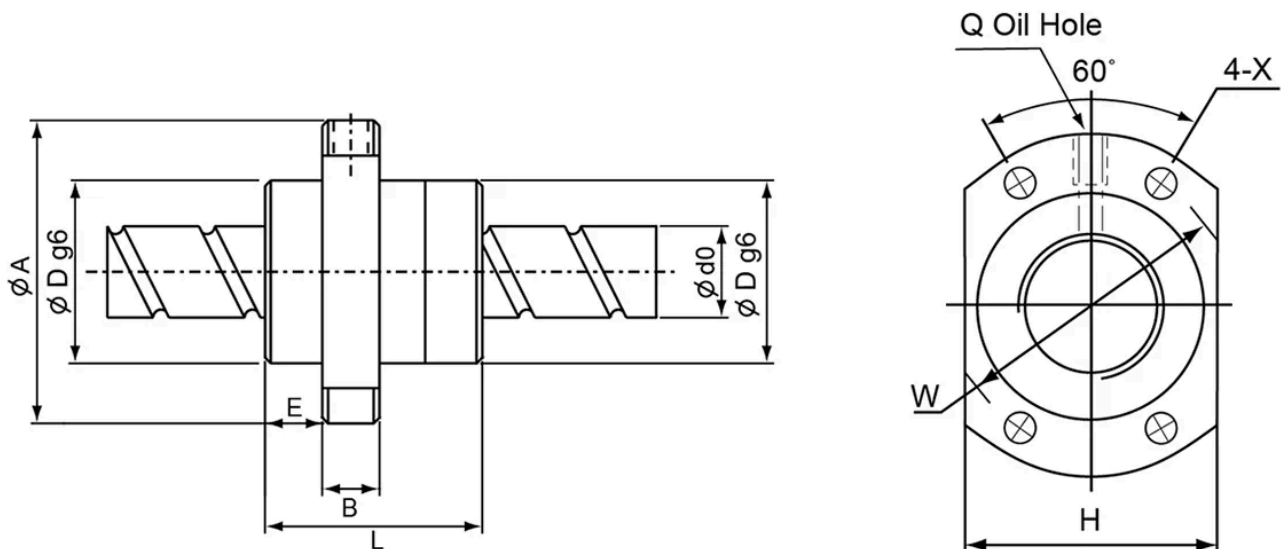
All dimensions in mm.



## General Data

Designation	Compatible with	Dynamic Load Ratings Ca (N)	Static Load Ratings C0a (N)	Ball diameter	Turns x circuits
<b>FSER1616</b>	BKN12 / FKN12 / BFN12 / FFN12	14833	19571	3.175	1.8 x 2
<b>FSER2020</b>	BKN15 / FKN15 / BFN15 / FFN15	16275	24172	3.175	1.8 x 2
<b>FSER2525</b>	BKN20 / FKN20 / BFN20 / FFN20	24339	37778	3.969	1.8 x 2
<b>FSER3232</b>	BKN25 / FKN25 / WBK25DF / BFN25 / FFN25	35169	59557	4.762	1.8 x 2
<b>FSER4040</b>	BKN30 / FKN30 / WBK30DF / WBK30DFF / BFN30 / FFN30	56682	115297	6.35	1.8 x 2
<b>FSER5050</b>	BKN40 / WBK40DF / WBK40DFF / BFN40	86514	188754	7.938	1.8 x 2

## Dimensions



Designation	A	B	D	E	H	L	Q	W	X
<b>FSER1616</b>	53	10	32	10.5	38	48	M6	42	4.5
<b>FSER2020</b>	62	10	39	10.8	46	55	M6	50	5.5
<b>FSER2525</b>	74	12	47	11.2	56	67	M6	60	6.6
<b>FSER3232</b>	92	15	58	14	68	82	M6	74	9
<b>FSER4040</b>	114	17	73	17	84	100	M6	93	11
<b>FSER5050</b>	135	20	90	21.5	92	125	M6	112	14

Designation	d0 x Lead
<b>FSER1616</b>	16 x 16
<b>FSER2020</b>	20 x 20
<b>FSER2525</b>	25 x 25
<b>FSER3232</b>	32 x 32
<b>FSER4040</b>	40 x 40
<b>FSER5050</b>	50 x 50