

SBI-HL /-HLS /-CL /-CLS

Slim, low height block without flange, standard length.
Side-nipple, dustproof end seal and self-lubricant container
end seal as option.

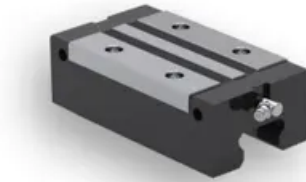
* S: Bolt size for bottom mounting type of block

All blocks and rails are also available in Raydent treated
material:

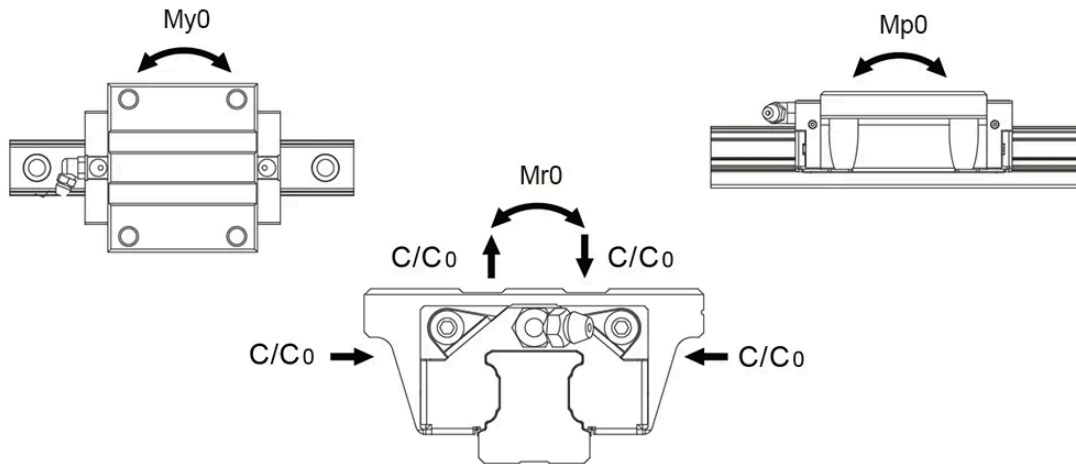
- Corrosion resistant
 - Patented black surface
 - Delivered with steel balls of standard bearing steel.
- Stainless steel balls are available on special request and
for a few sizes only. Contact Rollco for more information.

Dimensions in mm.

Lead times in the table below are only indications. Choice
of preload and other options will affect lead time. Please
contact us for exact delivery time for your request.



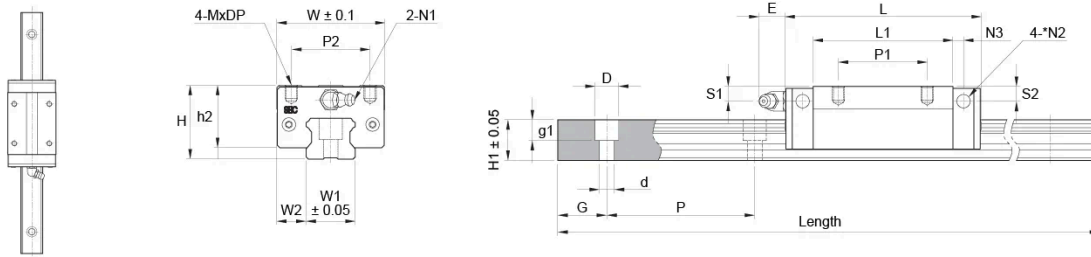
General Data



Designation	Dynamic Load Capacity C (N)	Static Load Capacity C0 (N)	Static Moment Mr0 (Nm)	Static Moment Mp0 (Nm)	Static Moment My0 (Nm)
SBI15HL	14100	24100	160	170	170
SBI15HLS	12300	18300	130	80	80
SBI20CL	22200	38200	360	330	330
SBI20CLS	19100	27000	270	150	150
SBI25CL	31500	52100	560	560	560
SBI25HL	31500	52100	560	560	560
SBI30HL	42800	65400	850	770	770
SBI35HL	59500	89100	1420	1280	1280
SBI45HL	79200	116300	2480	1900	1900
SBI55HL	127300	181800	4810	2970	2970

Designation	Dynamic Moment Mr (Nm)	Dynamic Moment Mp (Nm)	Dynamic Moment My (Nm)	Weight Block (g)	Weight Rail (g/m)
SBI15HL	94	99	99	190	1300
SBI15HLS	87	54	54	150	1300
SBI20CL	209	192	192	390	2200
SBI20CLS	191	106	106	230	2200
SBI25CL	339	339	339	660	3000
SBI25HL	339	339	339	690	3000
SBI30HL	556	504	504	1040	4250
SBI35HL	948	855	855	1560	6020
SBI45HL	1689	1294	1294	2800	9770
SBI55HL	3368	2080	2080	4420	13720

Dimensions



Designation	L	H	W	W1	W2	L1	H1	h2	S1
SBI15HL	63.8	24	34	15	9.5	45.2	13	21	4.5
SBI15HLS	56.8	24	34	15	9.5	38.2	13	21	4.5
SBI20CL	78.8	28	44	20	12	56.8	16.5	23.4	4.8
SBI20CLS	65.2	28	42	20	11	43.2	16.5	23.4	4.8
SBI25CL	92	33	48	23	12.5	70	20	27.5	5.4
SBI25HL	92	36	48	23	12.5	70	20	30.5	6
SBI30HL	107.6	42	60	28	16	79.6	23	35	8.5
SBI35HL	124.6	48	70	34	18	94.6	26	40.5	8
SBI45HL	142	60	86	45	20.5	108	32	51	10.5
SBI55HL	172.4	70	100	53	23.5	131	38	58	12

Designation	S2	D x d x g1	Hole Pitch (P)	MxDP	N1	N2	N3	P1	P2	E
SBI15HL	3.8	7.5 x 4.5 x 5.5	60	M4x4	M4x0.7	Ø 3.5	3.8	26	26	5.5
SBI15HLS	3.8	7.5 x 4.5 x 5.5	60	M4x4	M4x0.7	Ø 3.5	3.8	26	26	5.5
SBI20CL	4	9.5 x 6 x 8.5	60	M5x5	M6x0.75	Ø 3.5	5	32	32	12
SBI20CLS	4.3	9.5 x 6 x 8.5	60	M5x5	M6x0.75	Ø 3.5	5	32	32	12
SBI25CL	5.4	11 x 7 x 9	60	M6x6	M6x0.75	Ø 3.5	5	35	35	12
SBI25HL	5	11 x 7 x 9	60	M6x6	M6x0.75	Ø 3.5	5.5	35	35	12
SBI30HL	7.8	14 x 9 x 12	80	M8x8	M6x0.75	Ø 5.7	5	40	40	12
SBI35HL	8	14 x 9 x 12	80	M8x8	M6x0.75	Ø 5.7	6	50	50	12
SBI45HL	9.3	20 x 14 x 17	105	M10x10	PT1/8	Ø 5.7	6.5	60	60	13.5
SBI55HL	12	23 x 16 x 20	120	M12x12	PT1/8	Ø 8.7	8	75	75	13

Designation	G	P	Length
SBI15HL	20	60	3000
SBI15HLS	20	60	3000

Dimensions

Designation	G	P	Length
SBI20CL	20	60	4000
SBI20CLS	20	60	4000
SBI25CL	20	60	4000
SBI25HL	20	60	4000
SBI30HL	20	80	4000
SBI35HL	20	80	4000
SBI45HL	22.5	105	4000
SBI55HL	30	120	4000