

WRC Rail

Counterbore from above.
Cut to length acc. to request.
Rails can be joint together for extra long lengths.
Contact Rollco for more information.

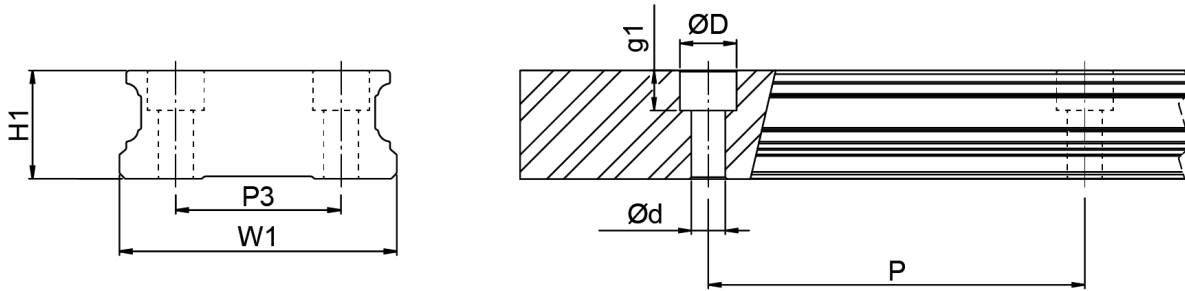
Dimensions in mm.



General Data

| Designation | Weight Rail (g/m) | Length (mm) |
|-------------|-------------------|-------------|
| WRC21/15 | 3596 | 4000 |
| WRC27/20 | 5259 | 4000 |

Dimensions



| Designation | H1 | W1 | D x d x g1 | Hole Pitch (P) | P3 |
|-------------|------|----|-----------------|----------------|----|
| WRC21/15 | 14.4 | 37 | 7.5 x 4.5 x 5.3 | 50 | 22 |
| WRC27/20 | 18.5 | 42 | 7.5 x 4.5 x 5.3 | 60 | 24 |