

## Wide Block Type LL

Long block with flange. Available in different accuracy classes and preload options.

Very high load capacity, stiffness and precision.

Dimensions in mm. (According to the DIN 645/I standards.)

Lead time/availability in the table below are only indications. Choice of preload and accuracy class will affect lead time. Please contact us for exact delivery time for your request.

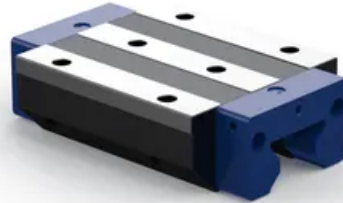
Higher accelerations and speeds than listed below are possible according to preload, load, lubrication and assembly position values. In these cases, please contact us for advice.

**Max. Operating Speed (m/s):** 3

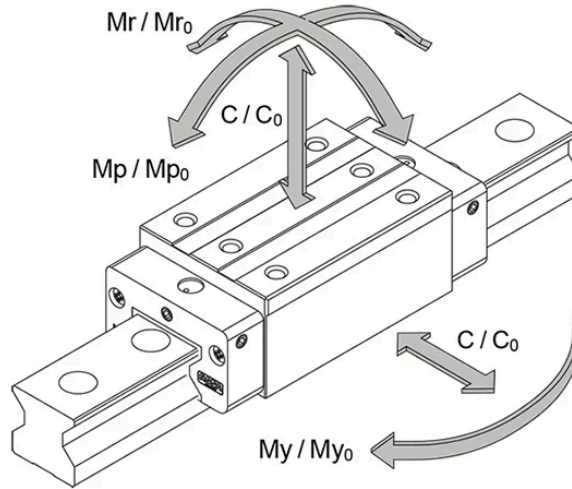
**Max. Acceleration (m/s<sup>2</sup>):** 50

**Temperature range (°C):** -10 °C to +80

**Material:** Hardened alloy steel blocks with rollers of hardened bearing steel. Plastic parts.



## General Data

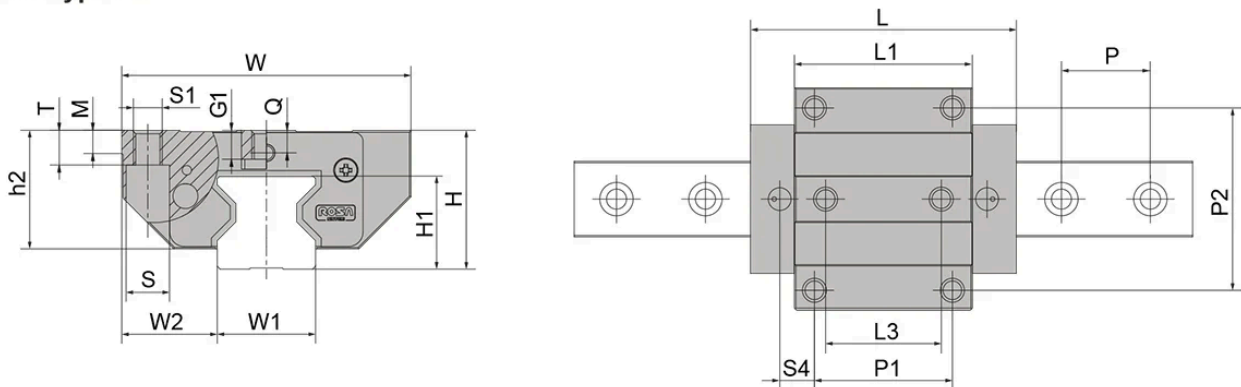


Designation	Dynamic Load Capacity C (N)	Static Load Capacity C0 (N)	Static Moment Mr0 (Nm)	Static Moment Mp0 (Nm)	Static Moment My0 (Nm)
RMG25LL	38900	76800	1150	970	970
RMG35LL	72600	136000	3014	2243	2243
RMG45LL	119500	242200	6672	4951	4951
RMG55LL	176000	351000	11915	8910	8910
RMG65LL	276000	579000	22100	11840	11840

Designation	Dynamic Moment Mr (Nm)	Dynamic Moment Mp (Nm)	Dynamic Moment My (Nm)
RMG25LL	583	491	491
RMG35LL	1595	1187	1187
RMG45LL	3293	2444	2444
RMG55LL	5977	4470	4470
RMG65LL	10530	8980	8980

## Dimensions

### Block type LL



Designation	L	H	W	L1	L3	H1	h2	W1	W2
RMG25LL	109.7	36	70	81.5	40	24.5	29.5	23	23.5

Designation	L	H	W	L1	L3	H1	h2	W1	W2
RMG35LL	142.3	48	100	103	52	32	41	34	33
RMG45LL	179.8	60	120	133.8	60	40	50	45	37.5
RMG55LL	215	70	140	162	70	48	57	53	43.5
RMG65LL	272.3	90	170	210.3	82	55	78	63	53.5

Designation	S1	S4	Q	S	T	G1	Hole Pitch (P)	P1	P2	M
RMG25LL	M8	23.7	5.5	11	9	6.5	30	45	57	7.5
RMG35LL	M10	27	7.9	15	12	10	40	62	82	8
RMG45LL	M12	33.9	8	18	15	12	52.5	80	100	10
RMG55LL	M14	42.5	9	20	18	13.5	60	95	116	12
RMG65LL	M16	62.15	15	23	22	19.5	75	110	142	15.5