

XTR---.0200

- Up to 60% higher load capacity
- Extra sustainable
- Extra exact
- Extra strong
- Extra long-lasting

Use profile XUP---.0700

Fixing square element BQ---.1000

Rectangular fixing element BR---.1100

Note! System Load Capacity refers to capacity of both rail and bearing. Dynamic Load Capacity refers to bearing.

Dimensions in mm.

Roller Type: Heavy

Sizes Available: 60; 70; 80; 90; 110; 120; 150





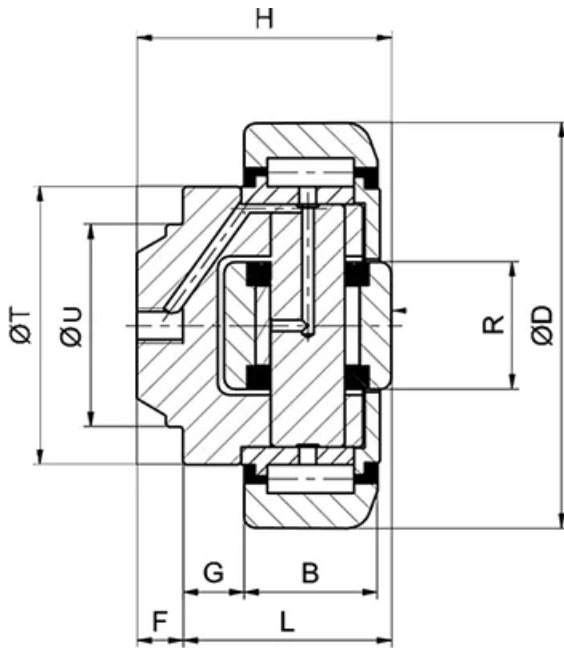
General Data

FA = System Load Capacity Axial
 FR = System Load Capacity Radial
 Ca = Dynamic Load Capacity Axial
 C = Dynamic Load Capacity Radial



| Designation | System Load Capacity Radial (N) | System Load Capacity Axial (N) | Dynamic Load Capacity Axial (N) | Dynamic Load Capacity Radial (N) | Profile |
|-------------|---------------------------------|--------------------------------|---------------------------------|----------------------------------|-----------------|
| XTR060.0200 | 15390 | 3800 | 11000 | 31000 | XUP-- -.0700 |
| XTR070.0200 | 16430 | 4100 | 13000 | 45500 | XUP-- -.0700 |
| XTR080.0200 | 18210 | 6500 | 18000 | 48000 | XUP-- -.0700 |
| XTR090.0200 | 31680 | 6600 | 23000 | 68000 | XUP-- -.0700 |
| XTR110.0200 | 34850 | 11500 | 31000 | 81000 | XUP-- -.0700 |
| XTR120.0200 | 47430 | 12700 | 43000 | 110000 | XUP-- -.0700 |
| XTR150.0200 | 82190 | 22600 | 68000 | 151000 | XUP-- -.0700 |

Dimensions



| Designation | B | D | F | G | H | L | R | T | U |
|-------------|----|-------|------|------|------|------|----|-----|----|
| XTR060.0200 | 20 | 65.5 | 7 | 9 | 37.5 | 30.5 | 20 | 42 | 30 |
| XTR070.0200 | 23 | 73.8 | 8 | 10.5 | 44 | 36 | 22 | 48 | 35 |
| XTR080.0200 | 23 | 81.7 | 11.5 | 10.5 | 48 | 36.5 | 24 | 54 | 40 |
| XTR090.0200 | 30 | 92.4 | 13 | 10.5 | 57 | 44 | 26 | 59 | 45 |
| XTR110.0200 | 31 | 111.4 | 14 | 20 | 69 | 55 | 34 | 71 | 60 |
| XTR120.0200 | 37 | 126.8 | 16.3 | 14 | 72.3 | 56 | 40 | 80 | 60 |
| XTR150.0200 | 45 | 153.1 | 20 | 8.5 | 78.5 | 58.5 | 50 | 103 | 60 |