

## STR---.4200

Plate, yoke and outside of roller made entirely in stainless steel 1.4301.

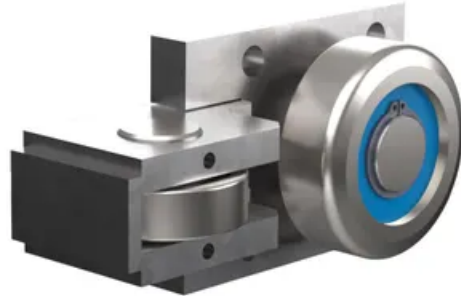
Stainless, sealed and lubricated for life rolling bearings inside the rollers.

Use profile UP---.0780

Dimensions in mm.

**Roller Type:** Stainless

**Sizes Available:** 50; 70; 80





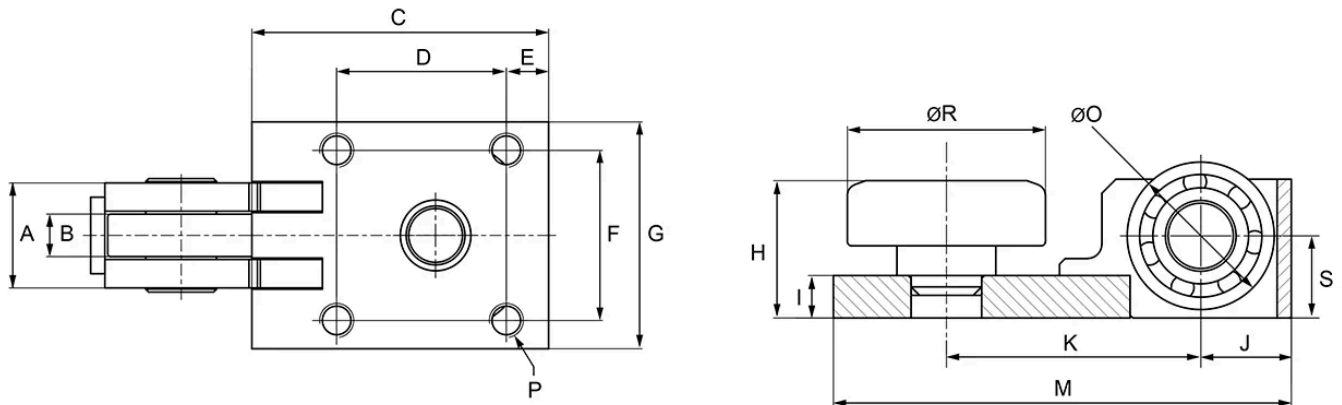
### General Data

FA = System Load Capacity Axial  
 FR = System Load Capacity Radial  
 Ca = Dynamic Load Capacity Axial  
 C = Dynamic Load Capacity Radial



Designation	System Load Capacity Radial (N)	System Load Capacity Axial (N)	Profile
STR050.4200	3500	2000	UP---.0780
STR070.4200	6000	3000	UP---.0780
STR080.4200	7200	3000	UP---.0780

## Dimensions



Designation	A	B	C	D	E	F	G	H	I
STR050.4200	33	12	72	40	10	30	50	37.9	15
STR070.4200	37	15	105	60	15	60	80	48.5	15
STR080.4200	37	15	105	60	15	60	80	48.5	15

Designation	J	K	M	N	O	P	R	S
STR050.4200	21	62	113	43	Ø 40	4 x M8	Ø 52.5	23
STR070.4200	32	90	162	55	Ø 52	4 x M12	Ø 70.1	29
STR080.4200	32	90	162	55	Ø 52	4 x M12	Ø 77.7	29