

## Metal Bellows Coupling KP

- 4-corrugation bellows
- Simple installation with EASY-clamping hub
- Short design
- High torsional stiffness

Smaller couplings from 2 Nm - 12 Nm, see MKP.

Size KP 25 - with 5-corrugation bellow and optional with EASY-PIN.

Please note reduced tightening torque for bigger hub bore diameter - see also  $\varnothing D 1/2_{max}$ .

Tightening torque refers to screws.

Dimensions in mm. Length dimensions according to DIN ISO 2768 cH.

**Material:** Bellows: stainless steel Hubs: high-tensile strength aluminium Clamping screws: ISO 4762 - 12.9 Press-fit wire: brass

**Temperature range (°C):** -20° to +120°C

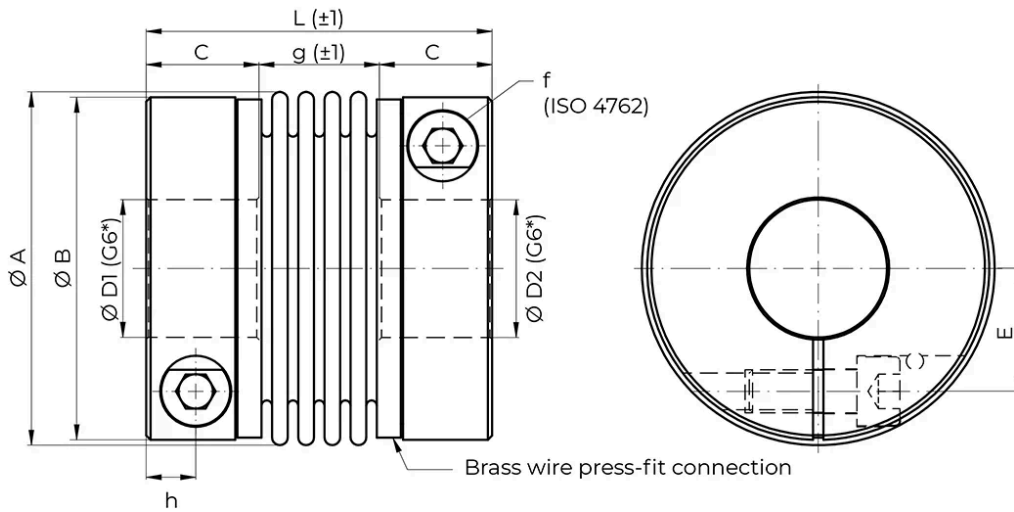


## General Data

Designation	Nominal Torque (Nm)	Max. Torque (Nm)	Moment of inertia ( $10^{-6}\text{kg}\cdot\text{m}^2$ )	Torsional stiffness (Nm/arcmin)	Axial max. shaft misalignment (mm)
KP25	25	50	0.064	4	0.5
KP35	35	70	0.13	9	0.5
KP60	60	120	0.27	14	0.6
KP100	100	200	0.35	20	0.6
KP170	170	340	0.76	28	0.8
KP270	270	540	2.0	52	0.8
KP400	400	600	2.15	74	0.7
KP600	600	900	5.0	106	0.7
KP900	900	1800	9.0	156	0.8

Designation	Lateral max. shaft misalignment (mm)	Axial spring rate (N/mm)	Lateral spring rate (N/mm)	Tightening Torque (Nm)	Max. Speed (rpm)	Weight (kg)
KP25	0.15	36	180	8	23 000	0.18
KP35	0.2	70	450	14	20 000	0.3
KP60	0.2	70	650	30	17 000	0.4
KP100	0.2	110	1 200	30	16 000	0.5
KP170	0.2	98	1 000	50	14 000	0.8
KP270	0.2	90	1 300	90	11 000	1.3
KP400	0.2	135	1 500	90	11 000	1.4
KP600	0.2	140	2 800	140	9 000	2.3
KP900	0.2	210	3 050	140	8 500	3.5

## Dimensions



\*Other bore tolerances on request.

Designation	Nominal Torque (Nm)	A	B	L	C	g	f	E	$\varnothing D1/2$ min.
KP25	25	50 ( $\pm 0.6$ )	48	58	17	24	M5	17	10
KP35	35	56	-	61	20	21	M6	19	10
KP60	60	66 ( $\pm 0.8$ )	63	67	22.2	23	M8	22	13
KP100	100	71 ( $\pm 0.8$ )	70	68	22	23.5	M8	25	14
KP170	170	82 ( $\pm 0.8$ )	79.5	80	26	28	M10	28.5	18
KP270	270	101 ( $\pm 1$ )	99	87	29	29	M12	35	25
KP400	400	101 ( $\pm 1$ )	99	91	29	33	M12	35	30
KP600	600	122	-	104	34	36	M14	42	32
KP900	900	133	-	127	45	37	M14	47	40

Designation	$\varnothing D1/2$ max.
KP25	28
KP35	32
KP60	35
KP100	38
KP170	43
KP270	55
KP400	55
KP600	68
KP900	75