

## RSCR

Single Nut, Cylindrical with Thread, Internal Recirculation.

Standard nuts are with oil-seals.

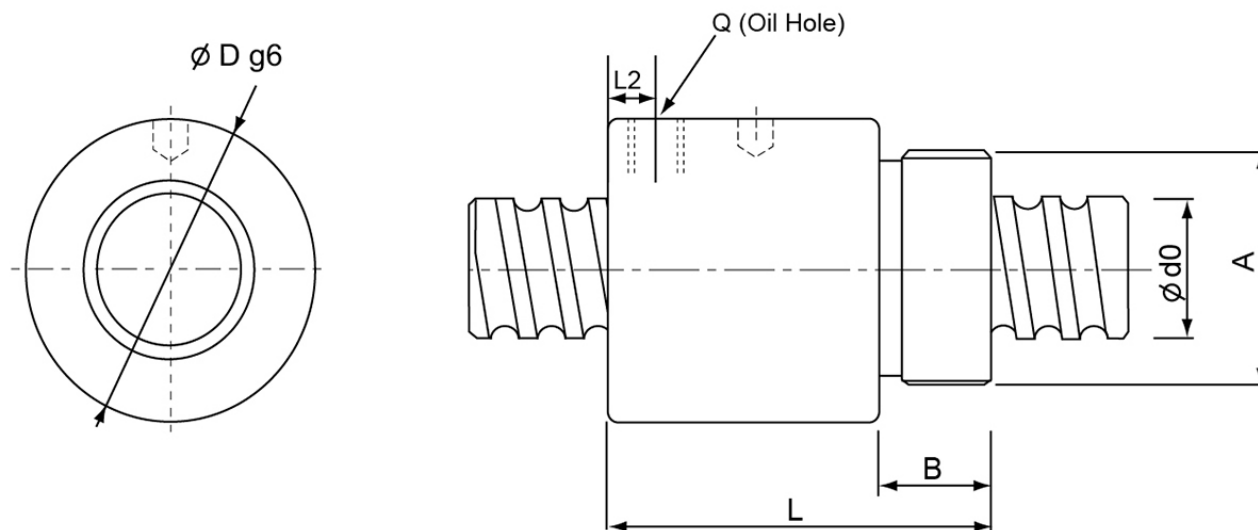
All dimensions in mm.



## Load

Designation	Compatible with	Dynamic Load Ratings Ca (N)	Static Load Ratings C0a (N)
<b>RSCR1605</b>	BKN12 / FKN12 / BFN12 / FFN12	13185	14960
<b>RSCR2005</b>	BKN15 / FKN15 / BFN15 / FFN15	14833	19571
<b>RSCR2505</b>	BKN20 / FKN20 / BFN20 / FFN20	16716	25320
<b>RSCR2510</b>	BKN17 / FKN17 / BFN17 / FFN17	28263	36248
<b>RSCR3205</b>	BKN25 / FKN25 / WBK25DF / BFN25 / FFN25	18874	33383
<b>RSCR3210</b>	BKN25 / FKN25 / WBK25DF / BFN25 / FFN25	47422	76861
<b>RSCR4005</b>	BKN30 / FKN30 / WBK30DF / WBK30DFF / BFN30 / FFN30	21003	35081
<b>RSCR4010</b>	BKN30 / FKN30 / WBK30DF / WBK30DFF / BFN30 / FFN30	52964	98826
<b>RSCR5010</b>	BKN40 / WBK40DF / WBK40DFF / BFN40	58203	120791

## Dimensions



Designation	d0 x Lead	A	B	L	D	Q	L2
<b>RSCR1605</b>	16 x 5	M30 x 1.5	16	56	32	M6	6.5
<b>RSCR2005</b>	20 x 5	M35 x 1.5	16.5	59.5	38	M6	7
<b>RSCR2505</b>	25 x 5	M40 x 1.5	17	60	42	M6	7
<b>RSCR2510</b>	25 x 10	M40 x 1.5	17	90	42	M6	10
<b>RSCR3205</b>	32 x 5	M48 x 1.5	19	60	52	M6	7
<b>RSCR3210</b>	32 x 10	M48 x 1.5	19	93	52	M6	12
<b>RSCR4005</b>	40 x 5	M56 x 1.5	19	59	58	M8	6
<b>RSCR4010</b>	40 x 10	M60 x 2	27	102	65	M8	12
<b>RSCR5010</b>	50 x 10	M72 x 2	29	104	78	M8	12

## Ball dia./Turns

Designation	Ball diameter	Turns x circuits
RSCR1605	3.175	1 x 4
RSCR2005	3.175	1 x 4
RSCR2505	3.175	1 x 4
RSCR2510	4.762	1 x 4
RSCR3205	3.175	1 x 4
RSCR3210	6.35	1 x 4
RSCR4005	3.175	1 x 4
RSCR4010	6.35	1 x 4
RSCR5010	6.35	1 x 4