

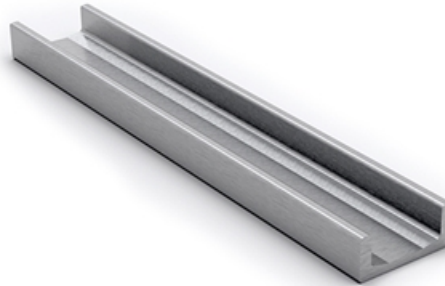
XUP---.0700

- Extra sustainable
- Extra exact
- Extra strong
- Extra long-lasting
- Chamber dimension tolerance 0,2 mm
- Max. loading pressure 1060 Mpa
- Elastic limit \geq 550 Mpa
- Tensile strength 700 ... 900 Mpa
- Special machining on request
- Max length in one piece 8,8 m

Ordering example: XUP 070.0700-2800
U-Profile with inside measurement 74,1 mm, length 2800 mm

Dimensions in mm.

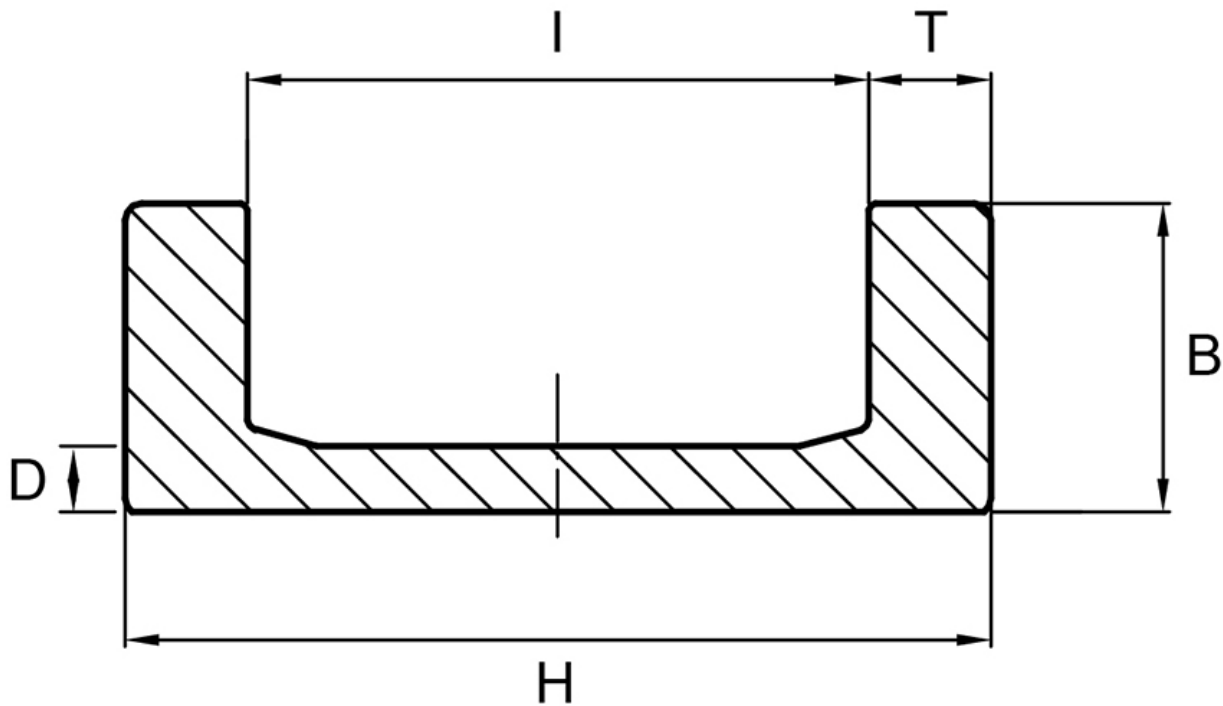
Material: 25 MnV5mod with plenty more load capacity



Load and weight

Designation	Weight (kg/m)
XUP060.0700	9.82
XUP070.0700	13.97
XUP080.0700	20.24
XUP090.0700	27.65
XUP110.0700	34.77
XUP120.0700	41.69
XUP150.0700	50.99

Dimensions



Designation	B	D	H	I	T
XUP060.0700	36	7 ±0.5	86.5	65.8 ±0.1	10.3 ±0.5
XUP070.0700	40 ±0.8	7.7 ±0.5	103.2	74.1 ±0.1	14.5 ±0.5
XUP080.0700	41 ±0.5	10.8 ±0.5	121.3	82 ±0.1	19.6 ±0.5
XUP090.0700	53 ±0.5	12.7 ±0.5	135.4	92.7 ±0.1	21.3 ±0.5
XUP110.0700	61.2 ±0.8	14 ±0.5	157.2	111.7 ±0.1	22.7 ±0.5
XUP120.0700	66.2 ±0.8	16.2 ±0.5	175	127.1 ±0.1	23.9 ±0.5
XUP150.0700	71.2 ±0.8	19.4 ±0.5	201.5	153.4 ±0.1	24 ±0.5