

## PAS ---.0360

- Polyamide roller combined – fixed with oilamide sliding block
- Lubricated for lifetime
- High abrasion resistance
- Low friction
- High chemical resistance to alcohol, salts, greases and certain acids and alkalis in diluted concentration.

Reduction of value by speed of:

- 1 m/sec: 0%
- 2 m/sec: -20%
- 3 m/sec: -30%

Use profile UP---.0730. See Fixing element rectangular and square.

Order example: Roller + fixing plate PAS040.0360/BQ  
1000

Roller Ø 40 mm - welded with mounting element 50 mm x  
50 mm x 8 mm

Dimensions in mm.

**Temperature:** Maximum working temperature 80° C.

**Speed:** Travel speed up to 5 m/sec

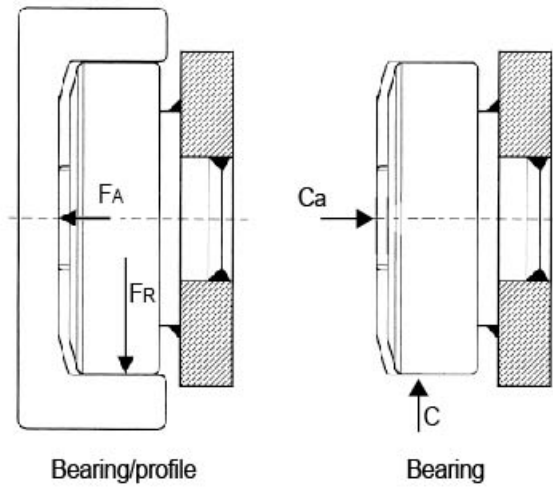
**Roller Type:** Polyamide

**Sizes Available:** 40; 50; 60; 100



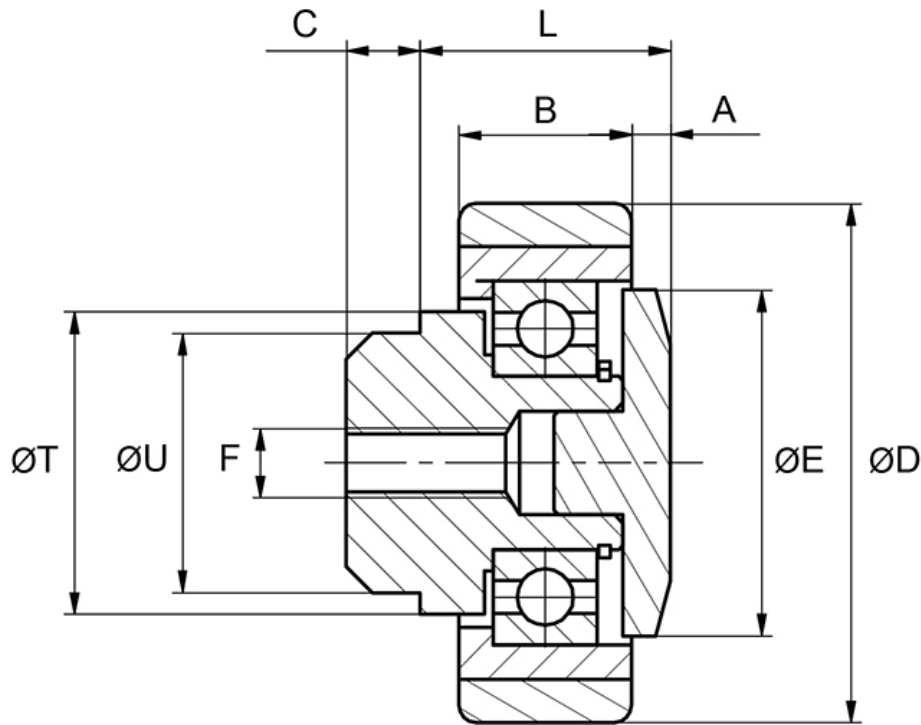
## General Data

FA = System Load Capacity Axial  
 FR = System Load Capacity Radial  
 Ca = Dynamic Load Capacity Axial  
 C = Dynamic Load Capacity Radial



Designation	System Load Capacity Radial (N)	System Load Capacity Axial (N)	Profile
PAS040.0360	900	400	UP---.0730
PAS050.0360	1200	400	UP---.0730
PAS060.0360	1500	600	UP---.0730
PAS100.0360	2500	600	UP---.0730

## Dimensions



Designation	A	B	C	D	E	F	L	T	U
PAS040.0360	2.8	15	2.8	40	20	M6	24	25	20
PAS050.0360	5	15	5	52.5	31	M8	27	35	30
PAS060.0360	4.5	18	8.5	62.5	40	M8	29	35	30
PAS100.0360	6.3	25	8	101.2	64	—	41	50	45