

TR---.0360

- Lubricated for lifetime

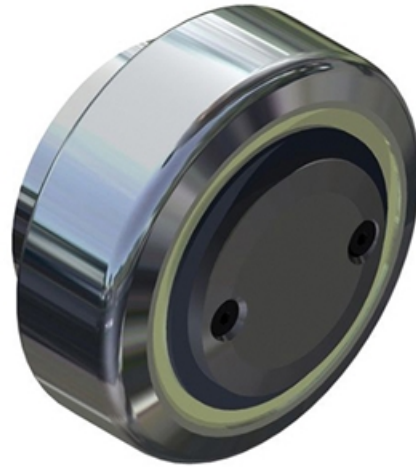
Use profile UP---.0700

Fixing square element BQ---.1000

Rectangular fixing element BR---.1100

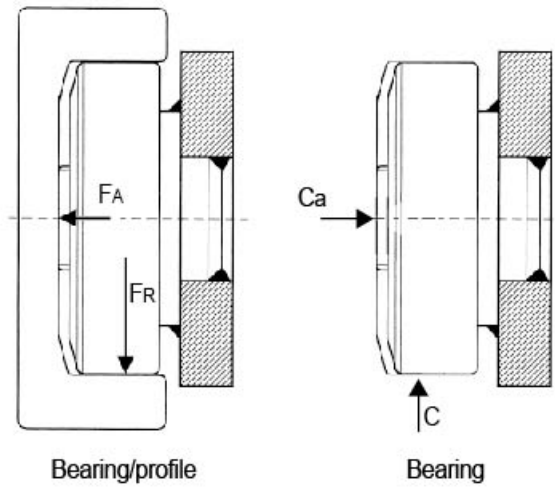
Note! System Load Capacity refers to capacity of both rail and bearing. Dynamic Load Capacity refers to bearing.

Dimensions in mm.



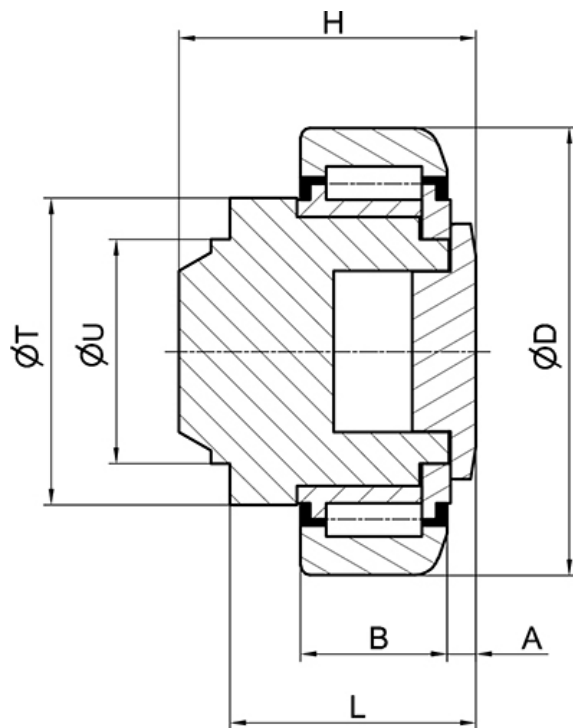
Load and weight

FA = System Load Capacity Axial
 FR = System Load Capacity Radial
 Ca = Dynamic Load Capacity Axial
 C = Dynamic Load Capacity Radial



Designation	System Load Capacity Radial (N)	System Load Capacity Axial (N)	Dynamic Load Capacity Radial (N)	Profile
TR050.0360	5300	2000	24500	UP---.0700
TR060.0360	8870	2950	31000	UP---.0700
TR070.0360	11400	3150	45500	UP---.0700
TR080.0360	12870	5000	48000	UP---.0700
TR090.0360	20370	5100	68000	UP---.0700
TR110.0360	24060	8900	81000	UP---.0700
TR120.0360	33440	9800	110000	UP---.0700
TR150.0360	51940	17400	151000	UP---.0700

Dimensions



Designation	A	B	D	H	L	T	U
TR050.0360	6	17	52.5	34	28	40	30
TR060.0360	5.5	20	62.5	43	33	42	30
TR070.0360	6.5	23	70.1	48	40	48	35
TR080.0360	7	23	77.7	50.5	39.5	54	40
TR090.0360	7	30	88.4	61	48	59	45
TR110.0360	8	31	107.7	69	55	71	60
TR120.0360	8	37	123	75.8	59.5	80	60
TR150.0360	8	45	149	82	62	103	60