

## WRA

Dimensions in mm.

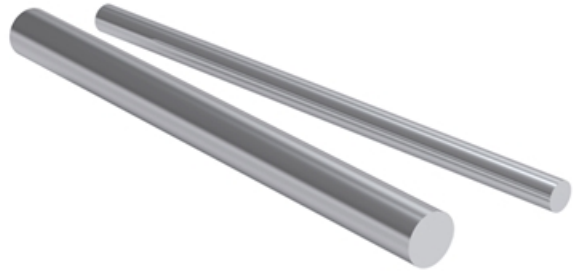
Reduction of load rating for linear ball bearing because of less hardness.

Other types available on request.

**Material:** X90CrMoV18 / 1.4112.

**Surface hardness:** 54 HRC min. Hardening depth according to DIN ISO 18203.

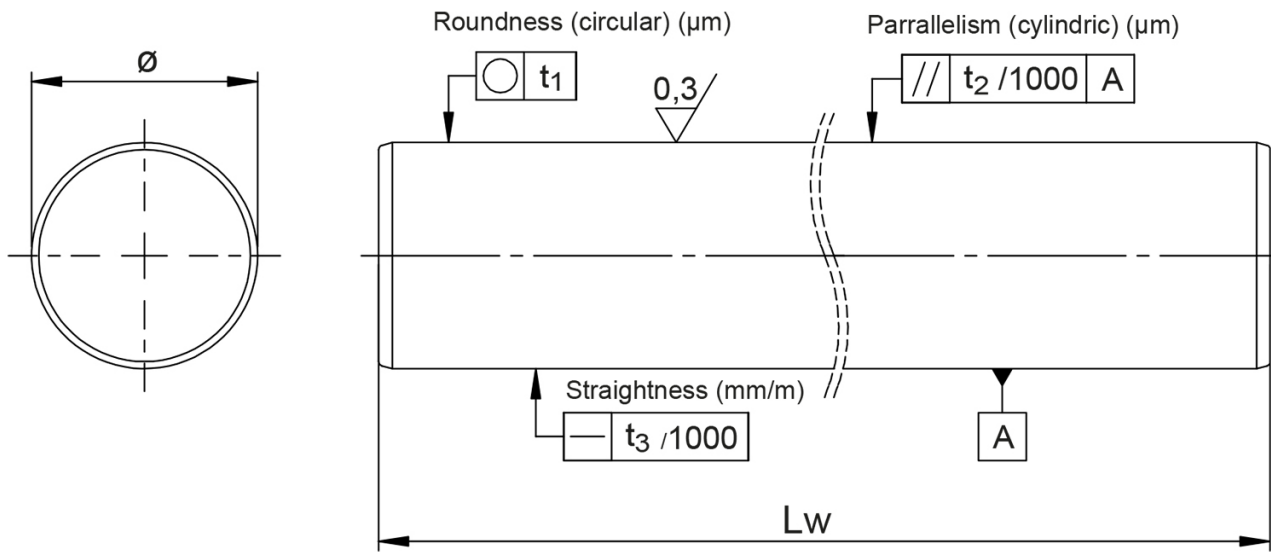
**Standard Tolerance:** ISO h6



## Load and weight

Designation	Weight (kg/m)
WRA8	0.39
WRA10	0.62
WRA12	0.89
WRA14	1.21
WRA16	1.58
WRA20	2.47
WRA25	3.85
WRA30	5.55
WRA40	9.86
WRA50	15.41

## Dimensions and data



Designation	Lw (mm)	Diameter	Hardening Depth	Roundness t1	Parallelism t2
WRA8	6000	8	.4	4	6
WRA10	6000	10	.4	4	6
WRA12	6000	12	.6	5	8
WRA14	6000	14	.6	5	8
WRA16	6000	16	.6	5	8
WRA20	6000	20	.9	6	9
WRA25	6000	25	.9	6	9
WRA30	6000	30	.9	6	9
WRA40	6000	40	1.5	7	11
WRA50	6000	50	1.5	7	11

Designation	Straightness t3
WRA8	.3
WRA10	.3
WRA12	.3
WRA14	.3
WRA16	.2
WRA20	.2
WRA25	.2
WRA30	.2
WRA40	.2
WRA50	.2