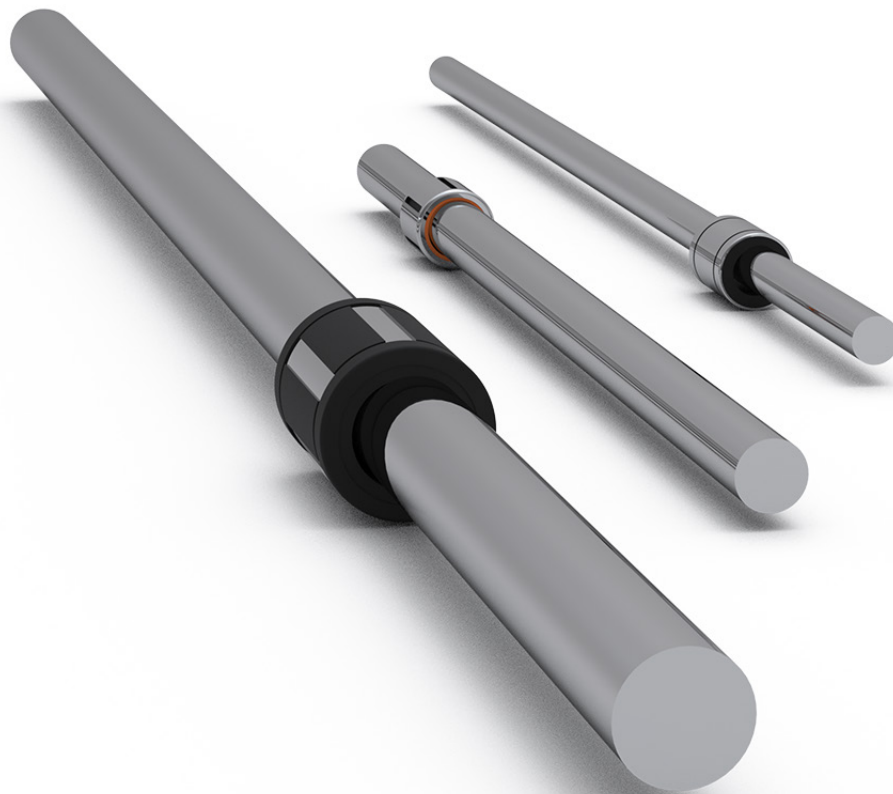


# **TECHNICAL INFORMATION**

## **LINEAR BALL BEARINGS & STEEL SHAFTS**

---



---

Information in this document is subject to change. Owing to continued product development, Rollco reserves the right to make alterations without prior notice. Every care has been taken to ensure the accuracy of the information, but no liability can be accepted for any errors or omissions.

All information and content included in this document, such as text, and images, are property of Rollco. Any reproduction, even partial, is allowed only by written permission by Rollco.

# Index

<b>GENERAL INFORMATION .....</b>	<b>4</b>
Product overview .....	4
<b>TECHNICAL INFORMATION .....</b>	<b>5</b>
Steel Shafts .....	5
Surface hardening depth .....	5
Lower track hardness .....	6
Chrome plated coating .....	7
Linear Ball Bearings .....	8
Contact factor ( $f_c$ ) .....	8
Load factor ( $f_w$ ) .....	8
Static safety factor .....	8
Mounting tolerances .....	9
Friction .....	9
Operating temperature .....	9
Lifetime calculation .....	10
<b>MACHINING OF SHAFTS .....</b>	<b>11</b>
Standard axial and radial threads .....	11
Separating cut .....	12
Special processing .....	12

# Product overview

## Shafts

Precision shafts are machine elements that in addition to high material quality, surface hardness, and surface quality are characterized by high precision in terms of dimension and shape.

This makes precision shafts extremely well-suited for applications like the following.

- Guide shaft in combination with linear bearings, cam and ball bearing rollers.
- Guide shaft for mounting by plain bearing.
- Stretch and straightening rolls.
- Shafts and axles in fixture construction and automation design.

## Low-corrosion steels

Precision shafts from X46 or X90 are available for use in medical technology, the food industry, and other production lines.

## Hard chrome plating

If high wear resistance and improved corrosion resistance compared to quenched and tempered steel are required, hard chrome plated precision shafts are perfect for the job.

## Shaft types

Type	Series	Size range	Production length	Standard tolerance	Material	Coating
Precision shafts	W	5 - 80 mm	Up to 6000 mm (depending on size)	h6	Cf53 / 1.1213 / C53G 59 HRC min.	-
Precision shafts, chrome-plated	WV	10 - 40 mm	6000 mm	h7	Cf53 / 1.1213 / C53G 59 HRC min.	Chrome layer 800 HV min. ca. 10 µm
Precision shafts, stainless steel X90	WRA	8 - 50 mm	6000 mm	h6	X90CrMoV18 / 1.4112 54 HRC min.	-
Precision shafts, stainless steel X46	WRB	5 - 60 mm	Up to 6000 mm (depending on size)	h6	X46Cr13 / 1.4034 52 HRC min.	-
Predrilled precision shafts	WB	12 - 40 mm	6000 mm	h6	Cf53 / 1.1213 / C53G 59 HRC min.	-
Hollow shafts	WH	12 - 50 mm	6000 mm	h6	C60 / 1.1221 59 HRC min.	-

## Linear ball bearings

Rollco linear ball bearings are available in closed, open, compact or self-aligning versions with corresponding hardened shafts in many sizes. We also offer the option of stainless steel ball bushings.

In our workshop in Helsingborg we cut and machine according to customer requirements and therefore are able to offer quick deliveries with high flexibility.

Accessories include housings, shaft blocks, shaft supports etc.

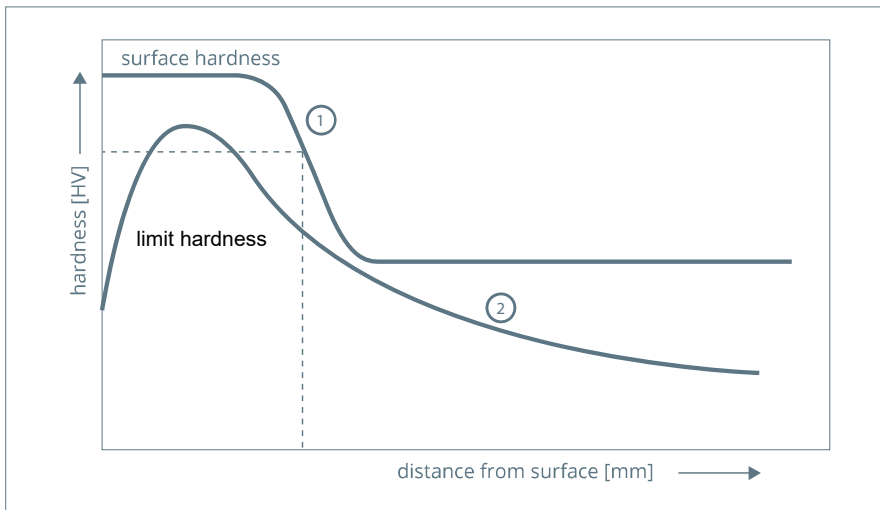


# Steel Shafts

## Surface hardening depth

For rolling bearings like linear ball bearings to work reliably with precision steel shafts, the Hertzian contact stress must be considered during design of the surface hardening depth (SHD):

- The surface hardening depth is the depth of the hardened zone in which 80% of the surface hardness is present as a limit hardness.
- Under the surface of a track with a ball carrying force  $Q_c$ , there is a three-axis stress.
- The maximum stress occurs at a certain distance from the surface of the track.
- The hardness characteristic (1) must run into the core area of the material in such a way that the rigidity derived from the hardness is higher than the comparison stress curve (2) of the three-axis stress at all points.
- For other special processing contact Rollco.



Shaft $\varnothing$	Surface hardening depth (SHD)
$\varnothing \leq 10$	0,4 min. (fully hardened possible)
$10 < \varnothing \leq 18$	0,6 min.
$18 < \varnothing \leq 30$	0,9 min.
$30 < \varnothing \leq 50$	1,5 min.
$50 < \varnothing \leq 80$	2,2 min.
$80 < \varnothing \leq 100$	3,2 min.

Dimensions in mm.

## Lower track hardness

If corrosion-resistant precision shafts stated below are used for a rolling bearing, the dynamic and static load ratings C and C<sub>0</sub> are reduced due to the lower track hardness of the shafts.

- X46 Cr13 / 1.4034
- X90 CrMoV18 / 1.4112

$$C_H = f_H \cdot C$$

$$C_{OH} = f_{HO} \cdot C_0$$

### C<sub>0H</sub>, C<sub>H</sub> [N]

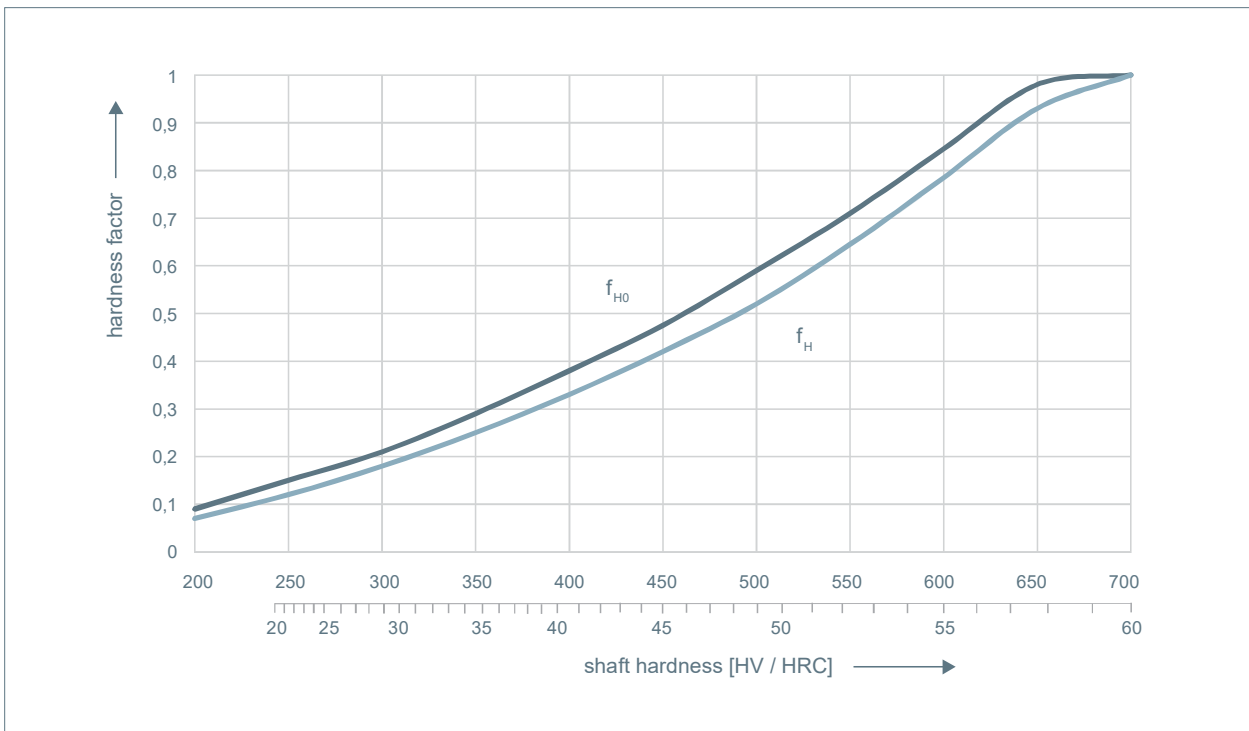
effective static and dynamic load with lower hardness

### f<sub>HO</sub>, f<sub>H</sub> [-]

static and dynamic hardness factor

### C<sub>0</sub>, C [N]

static and dynamic load of linear bearing



Static and dynamic hardness factors for lower hardness of shaft

### Note

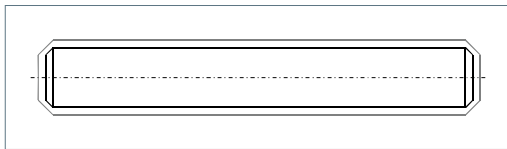
- Surface hardening only limits the corrosion resistance of X46 and X90 precision shafts on the faces.
- To avoid deposits of more base metals on the surface of corrosion-resistance precision shafts, machining should be carried out using solid carbide or ceramic tools. This allows surface corrosion (rust bloom) to be avoided.

## Chrome plated coating

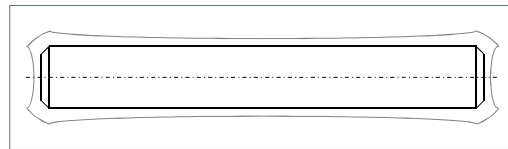
The chrome layer is galvanically applied to precision shafts at a temperature between 50 °C and 60 °C, do that no structural changes occur.

The chrome plating process takes place as a continuous process in a chrome plating system. This has the following advantages over conventional frame chrome plating:

- The continuous process provides an even coating of chrome, without flow density dependent differences in coating thickness (“bone effect”).
- Chrome coating over the entire length of the shaft without uncoated areas or contact points for up to 6 meters.
- High processing capability.
- Environmentally friendly, since the continuous chrome plating system is a closed system.



Continuous process



Conventional process

### Properties of the coating

- High wear resistance.
- In roller bearing applications, prevention of formation of false brinelling under vibration while stationary.
- Low coefficient of friction.
- Additional wear protection for roller bearings subject to mixed friction.
- Anti-stick effect due to low adhesion effect.
- Good corrosion resistance to outer diameter.

### Application

Since chrome layer does not contain Cr(VI), this coating is suitable for use in the food industry, medical technology, etc.

Product id	Layer thickness	Layer hardness	Number of layer	Corrosion protection	Wear protection	Max. single length	Cr(VI) free
WV	ca. 10 µm	800HV - 1100HV	1	Good, can be improved by belt polishing	Mixed friction	L > 6000 mm upon request	Yes

# Linear Ball Bearings

## Contact factor ( $f_c$ )

Load biasing, attributed to mounting errors and multiple bearing assemblies can be accounted for by using the coefficient in table.

Number of bearings for shaft	Contact factor
1	1.00
2	0,81
3	0,72
4	0,66
5	0,61

## Load factor ( $f_w$ )

The loads acting on the linear units include payload, inertial effects during acceleration and deceleration as well as moment loads. All of these factors are difficult to assess and are further complicated by the potential presence of shocks and vibrations. A more practical solution involves the use of the coefficients in table.

Operating conditions	$f_w$
Low speed operations (< 15 m/min) without shockloads	1 - 1,5
Medium speed operations (60 m/min) without shockloads	1,5 - 2
High speed operations (> 60 m/min) without shockloads	2 - 3,5

## Static safety factor

For applications with a high requirement for accuracy and smooth running, the static safety factor  $f_s$  should be higher than the values shown in table to prevent permanent deformation at the contact points.

$$f_s = \frac{C_o}{P_o}$$

$f_s$  = static safety factor

$P_o$  = static equivalent load (N)

$C_o$  = static load rating (N)

Operating conditions	$f_s$
Shafts subjected to small deflections and low shocks	1 ÷ 2
Elastic deflection can cross load the units	2 ÷ 4
System subjected to shock & vibration	3 ÷ 5



## Mounting tolerances

The table below shows the tolerances to be used for a proper bearing installation. They insure a precise and smooth motion.

### Recommended mounting tolerances for SBE-LME-LMES-LMEK-KH bushings.

Housing material	Housing tolerance
Steel/cast iron	H7
Aluminium/alloy	H7

## Friction

The magnitude of the friction force is affected by several factors. The type of bearing, the operating conditions, the type and quantity of the lubricant, the presence or lack of seals all impact the overall frictional behaviour.

Standard seals can add between 2 and 5 N to the overall friction force.

The magnitude of the coefficient of friction depends upon the operating conditions such as load, moments and/or preload. Table below shows the dynamic coefficient of friction for each type of bearing under normal operating condition ( $P/C = 0.2$ ) and proper assembly.

Type of bearing	Friction coefficient
KH	0.004 to 0.006
LME/SBE	0.002 to 0.003

## Operating temperature

The operating temperature ranges of the various bearings are shown in table below. Should the operating temperature exceed the limits shown in the table, please contact Rollco. Stainless steel units, without seals, can operate between  $-20/+120^{\circ}\text{C}$ .

Type of bearing	Operating temperature
KH	$-20$ to $+100^{\circ}\text{C}$
LME/LMES/SBE	$-20$ to $+100^{\circ}\text{C}$

# Lifetime calculation

## Dynamic load rating C

The dynamic load rating C is a load of constant magnitude under which 90% of a statistically significant number of apparently identical bearings would reach a theoretical life of 50 km without the apparent appearance of metal fatigue.

## Static load rating C<sub>0</sub>

The static load rating C<sub>0</sub> is defined as the load that would cause a permanent deformation equal to 1/10.000 of the ball diameter at the most stressed contact point.

## Life of a linear ball bearing

Repeated stresses onto the contact surfaces could lead to material fatigue, this will lead to the appearance of surface pitting. The life of the unit is defined as the duration before the appearance of pitting.

## Rated life (L)

The rated life L is the total traveled distance which 90% of a statistically significant number of apparently identical bearings would reach under the same operating conditions without the apparent appearance of metal fatigue.

$$L = (C/P)^3 \cdot 50 \quad (1)$$

L = rated life (km)

C = dynamic load ratings (N)

P = equivalent dynamic load (N)

When a system is subjected to a load equal to the dynamic load rating C the resulting life equal the rated life (50 km). The theoretical life of a linear bearing is affected by the load and by the operating conditions (temperature, vibration, shock, load distribution, etc.) In such cases the theoretical life is calculated with the help of equation 2.

$$L = (f_c \cdot C / f_w \cdot P)^3 \cdot 50 \quad (2)$$

L = rated life (km)

C = dynamic load ratings (N)

P = equivalent dynamic load (N)

f<sub>c</sub> = Contact coefficient

f<sub>w</sub> = Load factor

The following equation (3) allows the conversion of the rated life in hours.

$$L_h = L \cdot 10^3 / (2 \cdot L_s \cdot n_1 \cdot 60) \quad (3)$$

L<sub>h</sub> = rated life (hours)

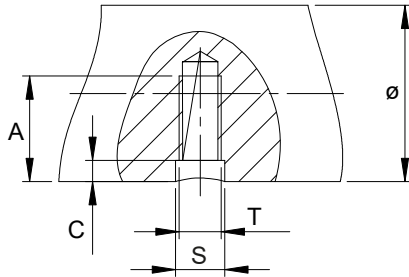
L<sub>s</sub> = stroke length (m)

L = rated life (km)

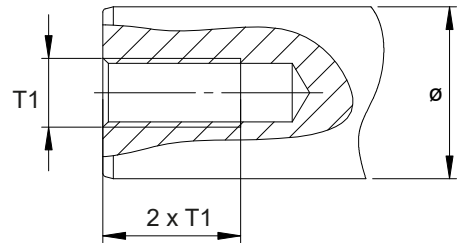
n<sub>1</sub> = operating frequency (stroke/min)

## Standard axial and radial threads

If precision shaft are to be combined with shaft support, radial holes are needed. Radial holes are drilled in the precision shaft after hardening and grinding. Thread size and depth depend on the diameter of the shaft.



Radial thread (RT)



Axial thread (AT)

### Radial thread

Type	T	S	C	A (min)
RT W12 - W15	M4	5	2	7
RT W16 - W20	M5	6	2,5	9
RT W20 - W25	M6	7	3	11
RT W25 - W30	M8	9	3	15
RT W30 - W40	M10	11	4	19
RT W40 - W50	M12	13	4	21
RT W50 - W60	M14	15	4	25

### Axial thread

Type	T1	2 x T1
AT W8 - W10	M3	6
AT W10 - W12	M4	8
AT W12 - W14	M5	10
AT W14 - W20	M6	12
AT W15 - W25	M8	16
AT W18 - W40	M10	20
AT W24 - W50	M12	24
AT W30 - W80	M16	32
AT W50 - W80	M20	40
AT W60 - W80	M24	48

Dimensions in mm.

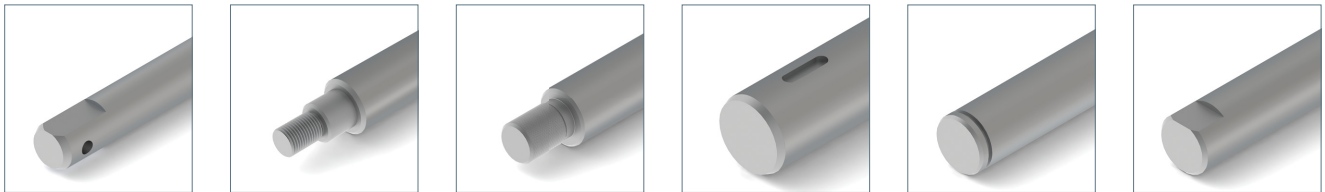
## Separating cut

The precision shaft is cut to length and the faces are deburred using a manual chamfer. No other processing is done. The separating cut is standard.

## Special processing

If necessary, special processing can be carried out according to the needs of the customer. A great variety of shapes and combinations is possible. A few processing options are listed below.

- Journal
- Feather key groove
- Flattening or flutes
- Clearance groove
- Crosswise groove
- Axial / radial threads (metric / imperial)
- External threads (metric / imperial)



Special processing



**ALWAYS THE RIGHT  
SOLUTION AT THE RIGHT TIME.**

**ROLLCO**

LINEAR SOLUTIONS **YOUR WAY**

With reliability, competence and commitment Rollco rapidly delivers the right solutions and components to create safe and cost-effective automation and linear movement.

**Rollco AB**

Box 22234  
Ekvändan 3  
250 24 Helsingborg  
Sweden  
Tel. +46 42 15 00 40  
[www.rollco.se](http://www.rollco.se)

**Rollco A/S**

Skomagervej 13 E  
7100 Vejle  
Denmark  
Tel. +45 75 52 26 66  
[www.rollco.dk](http://www.rollco.dk)

**Rollco Oy**

Sarankulmankatu 12  
33900 Tampere  
Finland  
Tel. +358 207 57 97 90  
[www.rollco.fi](http://www.rollco.fi)

**Rollco Norge AS**

Industrigata 6  
3414 Lierstrada  
Norway  
Tel. +47 32 84 00 34  
[www.rollco.no](http://www.rollco.no)

**Rollco Taiwan**

No. 28, Lane 125, Da-an Road  
Shulin District 238  
New Taipei City, Taiwan  
Tel. +886-2-8687-2726  
Fax +886-2-8687-2720  
[www.rollco-tw.com](http://www.rollco-tw.com)